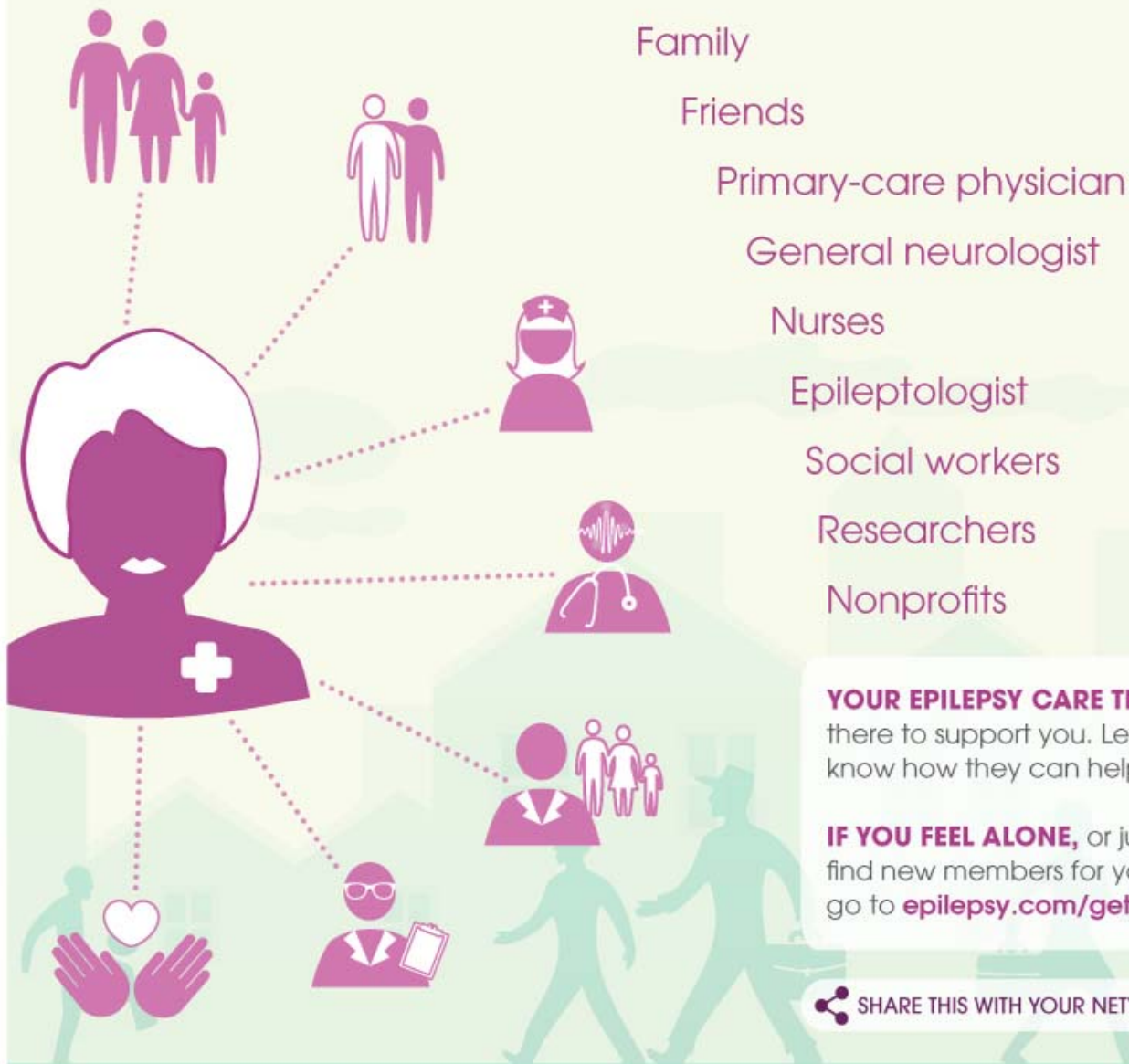



Your Epilepsy Care Team

Hundreds of people work hard for you—and your future.



YOUR EPILEPSY CARE TEAM is there to support you. Let them know how they can help.

IF YOU FEEL ALONE, or just want to find new members for your team, go to [epilepsy.com/get-help](https://www.epilepsy.com/get-help)

 SHARE THIS WITH YOUR NETWORK!